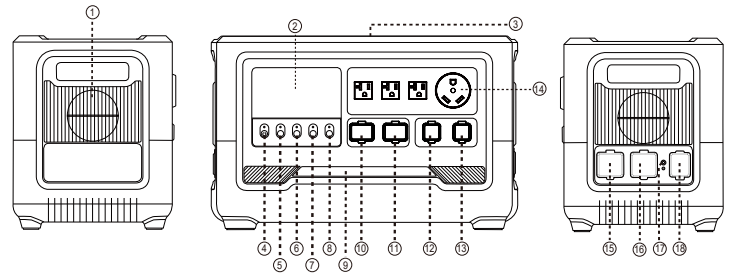
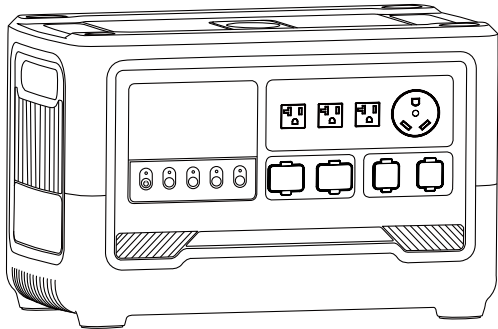


# Portable Power Station G24



- ① Cooling Hole
- ② LCD Display
- ③ Wireless Charging Position
- ④ Main Power Switch
- ⑤ AC Switch
- ⑥ USB Switch
- ⑦ DC Switch
- ⑧ LED Light Switch
- ⑨ LED light
- ⑩ USB-C Ports\*2
- ⑪ USB-A Ports\*2
- ⑫ DC Output Port
- ⑬ Car Charger Output Port
- ⑭ AC Output Port
- ⑮ AC Output Port
- ⑯ Data & Solar Input Port
- ⑰ Grounding Connection Port
- ⑱ AC Input Port

## User's Manual

Thank you for purchasing our energy storage series products. We are striving to create innovative products with extreme safety and excellent performance for you, and we are Please read the user's manual carefully before using the product to ensure a safe and satisfactory operation.

## Specification

Capacity:	2048Wh (51.2V/40Ah)		
Battery Type:	LiFePO4 battery cell		
Input:	AC	1200W Max	100V-120V~,50Hz/60Hz
	XT60	12V-80V/Max 20A ( Max 1200W )	
Inverter Waveform:	Pure Sine Wave		
AC Output:	Rated Power: 2400W	100V-120V~,50Hz/60Hz	
	Peak Power : Max 4800W		
DC Output:	2x USB-C	PD 140W Max ( 5V/9V/12V/15V/3A, 20V/28V/5A)	
	2x USB-A	QC3.0 ( 5V/3A, 9V/2A,12V/1.67A) Max 22.5W	
	1x Car Socket Port	12V/30A	
	1x XT60 Port	12V/30A	

## CAUTION

- Please keep dry and stay away from fire.
- Do not disassemble, puncture or squeeze the portable power station.
- Please recycle and dispose of the product in accordance with local laws and regulations.
- Please hand it over to a professional recycling company to dispose this portable power station.
- Children and the disabled please use this product with guardian.

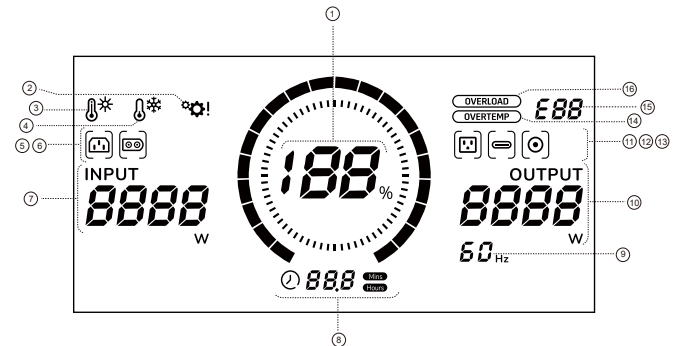
## Safety Instructions and Maintenance

- Please read the manual carefully before using the product.
- To reduce the risk of injury, please pay more attention when using this product near children.
- Do not put fingers, palms or any part of your body into the product.
- Use the unrecommended accessories may cause fire, electric shock or personal injury.
- Do not use damaged or modified battery packs or devices.
- Do not operate the portable power station with a damaged cord, plug or output cable. Otherwise it may cause a short circuit and risk of fire.
- Please hand the power station to a qualified service provider for repair or maintenance. Do not disassemble the portable power station by yourself, as wrong disassembly method may cause the risk of fire or electric shock.
- In order to reduce the risk of electric shock when the product fails, disconnects the portable power station from the power supply before performing any instructive maintenance operations.
- Please charge the product in a well-ventilated place, do not obstruct the air circulation.
- Under some extremely harsh conditions, liquid may be ejected from the battery. Avoid contact with batteries and liquids. If contacted please rinse with plenty of water. If the liquid comes into contact with the eyes, please seek other medical help.
- Please do not expose the product to fire or excessive heat.
- Only repairs by qualified service personnel.
- Please do not exceed the specified input AC voltage. Otherwise it may cause product failure, we will not be responsible for providing free maintenance services. Please keep the safety instructions properly.

## Introduction

- Faster Wall Charging:**  
This product offers multiple charging options. The industry-leading 1200W high-power AC input allows you to complete charging within 1.6 hours. Alternatively, you can charge using your car with a maximum output of 600W or utilize up to 1200W solar panels for charging. When you are off the grid, our portable solar panels can be used to charge the product, and the integrated MPPT charging controller ensures the most efficient solar charging. When you are at home, you can use a wall outlet to charge the product.
- This product is a gas-free solar generator with various port options, providing power to a variety of devices, including fast-charging 140W USB-C Power Delivery, multiple fast-charging USB-A ports, stabilized 12V, and AC ports.

## LCD Display



Battery Information indication	①		Battery Capacity		
Input indication	⑤		AC Input	⑦	INPUT 8888 W
	⑥		Solar Input	⑨	50 Hz
Output indication	⑩		Current Output Power	⑫	
	⑪		AC Output Icon	⑬	
Remaining time indication	⑧		Remaining Discharge/ Battery Full Time	⑧	Mins Minutes
				⑧	Hours Hours
Protection indication	②		System Fault Indicator	⑭	
	③		High Temperature	⑮	888
	④		Low Temperature	⑯	

### Attention:

- Press and hold the button for 3 seconds to power on/off. After powering on, the display screen lights up, showing information such as battery level, time, input, and output. The buzzer beeps once, and the machine displays normally after completing the self-check. If there is no operation for 10 minutes or if the button is long-pressed to turn off the main power, it only affects the discharge port, and the charging port is not affected.
- In the power-on state, without charging and with all outputs closed, the screen backlight turns off after 3 minutes of inactivity, entering sleep mode. After 10 minutes, the machine shuts down.
- In charging mode, with the output port open and no activity, the screen backlight turns off after 3 minutes. The On/Off button indicator flashes breathing light, and the corresponding output port light remains on, without affecting charging and discharging.

## AC Socket

- For this product, the type of AC power socket is subject to relevant regulations of the country and region, the number of socket is also different. There is only one socket with a larger area and two socket with a smaller area. For details, please see the description and picture in the user manual.
- Although the number and size of socket is different, their operation is the same.

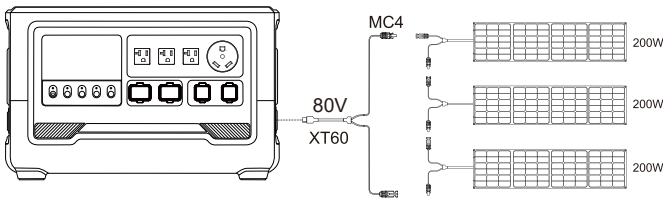
	Country	Quantity	specifications
	UK	3	
	UN	3	
	CN	3	
	EU	3	
	South Africa	3	
	U.S./JP	4	
	AU	3	

## Solar Energy Series/Parallel Charging

The portable power station supports charging with a maximum 1200W solar panel. You can purchase solar panels and dedicated cable accessories that are compatible with the portable power station to achieve a high-power, fast solar charging experience.

### Caution:

- This product supports solar panels with a maximum voltage of 80V and a maximum current of 20A.

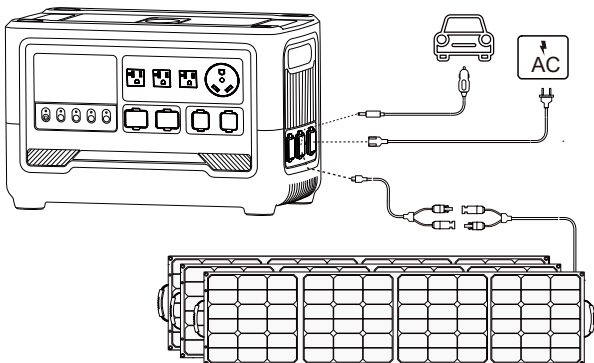


### Precautions:

- When charging this product through AC input, you can use the AC output function. When using AC output, the load is powered by the input side.
- If this product is charged through AC input during AC output operation, the product will switch to EPS mode, continuously supplying power to the load.
- If the product is not operated according to the instructions, resulting in the inability of devices to function properly or data loss, the company will not be held responsible.

## How to Charge

- Please charge this product before use.
- Before storing the battery for an extended period, please ensure it is fully charged. Check the battery level every 3 months and recharge if necessary.
- This product has two input interfaces: an AC charging port and a solar charging port. Through these two interfaces, you can use various charging methods to charge this product.
- Super Fast Charging: AC Input Port (You can use AC power through the AC charging port to charge the portable power station at a maximum power of 1200W.)
- Solar Fast Charging.
- Car Charging.

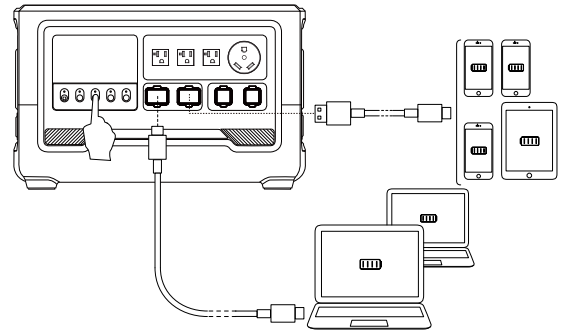


### Precautions:

- When charging this product through AC input, you can use the AC output function. When using AC output, the load is powered by the input side.
- If this product is charged through AC input during AC output operation, the product will switch to EPS mode, continuously supplying power to the load.

## Using the USB Output Function

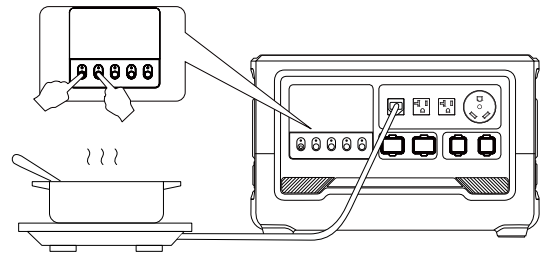
- Press and hold the main power switch for 3 seconds to power on the host. The main power indicator lights up, and the display screen lights up, entering standby mode.
- Press the USB switch to activate the USB function.
- Insert the USB device to begin using.



## Using the AC Output Function

All AC power outlets can operate simultaneously under the condition that the total power does not exceed 2400W.

- Ensure the battery is charged. Press and hold the main power switch for 3 seconds to power on the host. The main power indicator lights up, and the display screen lights up, entering standby mode.
- Insert the AC appliance.
- Press the AC power switch to activate the AC output function. The product starts supplying power to external AC appliances.



### Precautions:

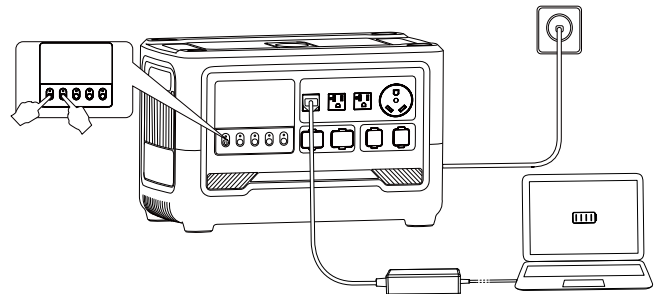
- When charging through the AC input, you can use the AC output function. When using the AC output, the load is powered by the input side.
- If this product is charged through AC input during AC output operation, the product will switch to EPS mode, continuously supplying power to the load.

## EPS Function Usage

- Insert AC input to power the product. The product will automatically turn on and enter charging mode.
- Plug in the AC appliance.
- Press the AC power switch to activate the AC output function. The AC appliance will enter EPS power mode.
- In the event of external AC power failure, the product will continue to provide AC power to the appliance.

### Caution:

- Ensure that the AC input is stable and normal access to ground
- If the input current exceeds 14A, the input will be turned off, and the output will be turned off simultaneously to avoid accidental power interruption. Please conduct testing before use.



### Precautions:

- This product has EPS functionality, not professional-grade UPS functionality. In the event of a sudden AC power outage, it can automatically switch to battery power within 20 milliseconds. Please do not connect it to devices with high requirements for uninterrupted power supply (such as data servers and workstations) without multiple compatibility tests. Failure to do so may impact your user experience.
- If the product is not operated according to the instructions, resulting in the inability of devices to function properly or data loss, the company will not be held responsible.